

Aura Series

PP-7000U-III

THERMAL PRINTER

USB DRIVER INSTALLATION GUIDE

1. Jumper setup

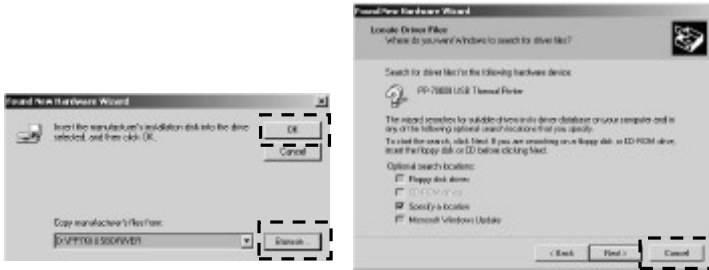
Please set in setup window the same way as in serial connection, i.e. switch positions both 1, and 2 to OFF leaving the rest unchanged as factory default setting.

2. Driver installation

There are 2 stages of device driver installations and a port setup procedure required for the USB interface printer. First is to install PP-7000U-III Thermal Printer. When the PP-7000U-III is connected and turned on to a host running Windows, a message like the right picture will pop up and the “Add/New Hardware Wizard” (for Win98) or the “Found New Hardware Wizard” (for Win 2000 or WinXP) will come up.



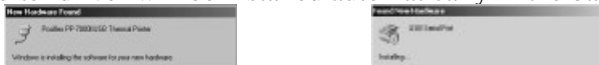
Follow the wizard and browse to the folder that holds the driver and specify this location for the wizard.



Keep on following the wizard and it will come to a “Finish”. The process in “Add/New Hardware Wizard” for Win98 is also very similar to what shown here for Win2000/XP.



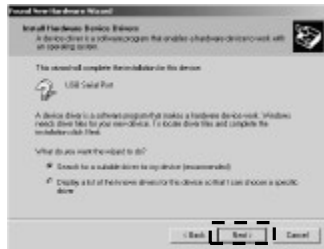
There are however some differences after this. For Win98 the left picture below will show up for a while and the USB serial converter driver will be installed automatically in the background.



For Win 2000 / XP, the right picture above will show up and the USB serial converter driver installation will keep on as in pictures below.



Follow the wizard and browse to the folder that holds the driver and specify this location for the wizard again.



The process for this stage USB serial port converter driver installation is quite similar to the last stage for the USB printer device driver.



After “Finish” in the right picture above for Win2000/XP or “New Hardware Found” message disappear in Win98, a serial port assignment setup will be required to use the USB printer as if a normal serial printer. The procedures described below may also be engaged any time whenever a re-assignment of the COM port number is required. Select “Start”, “Settings”, “System”,

“Hardware”, “Device Manager” consecutively in the Windows screen and explode the item “Ports (COM & LPT)” to find the “Posiflex PP-7000UIII Thermal Printer” designated to a COM port number as in one of the pictures below.



Click right button of mouse on this item and select “Properties” then “Port Settings”, please set parameters in the right window according what the system integrator requires with the Application Program. A common practice is to set “19200” for “Bits per second”, “8” for “Data bits”, “None” for “Parity”, “1” for “Stop bits”, “Hardware” for “Flow control” if not specified.



Click “Advanced..” in this above window to select the “COM Port Number” to any number as required by the Application Program like the example screen in picture at right. Then click “OK” and finalize the device manager. After reboot, the Posiflex USB interface thermal printer will operate the same way as if a RS232 serial printer connected on the COM port specified.



Please note that it is allowed to apply more than one Posiflex USB printer in one setup because each Posiflex USB printer may carry different internal ID. The only point to watch is that you must assign each USB printer with a different virtual COM port number. Similarly in case one Posiflex USB printer is to be replaced by another within field application, please always remember to assign the necessary properties as above to the succeeding printer before putting it to operate as the successor.